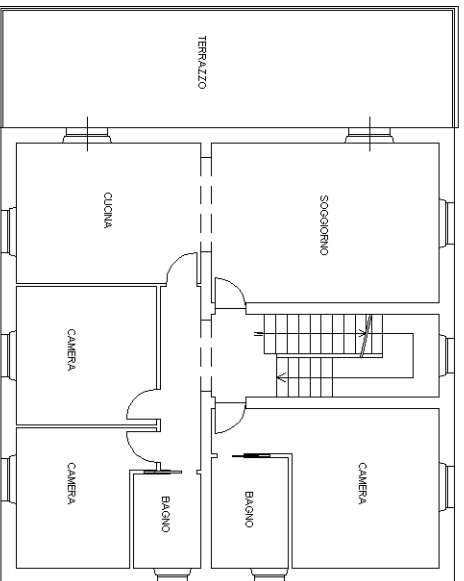
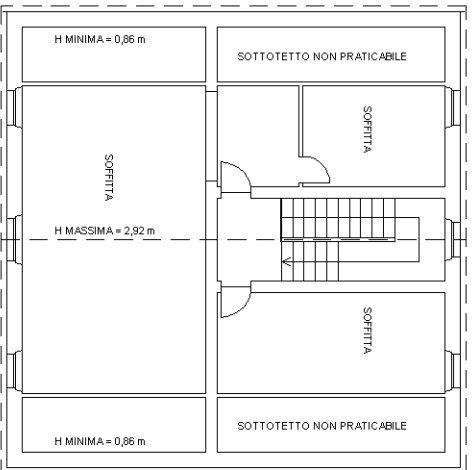


PIANO TERRA = 3,14 m



PIANO PRIMO = 2,80 m



H MINIMA = 0,86 m

SOTTOTETTO NON PRATICABILE

SOFFITTA

SOFFITTA

H MASSIMA = 2,92 m

SOFFITTA

H MINIMA = 0,86 m

SOTTOTETTO NON PRATICABILE